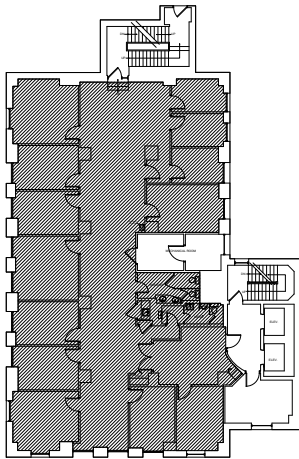


Comerica Suite #600

SCALE: NONE



BUILDING KEY

SCALE: NO SCALE

Comerica Building

SUITE #600

101 N. WASHINGTON AVENUE
LANSING, MI 48933

USEABLE AREA: 3,830 SF*

RENTABLE AREA: 4,612 SF*

* Square feet measurements subject to change upon site measure