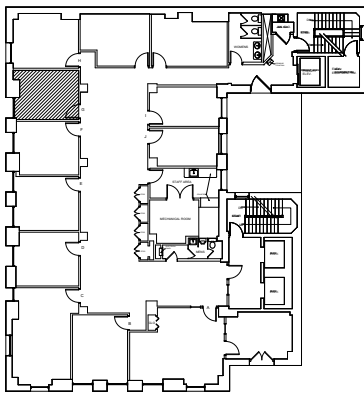


Comerica Suite #400G

SCALE: NONE



BUILDING KEY

SCALE: NO SCALE

Comerica Building
SUITE #400G
101 N. WASHINGTON AVENUE LANSING, MI 48933
USEABLE AREA: 168 SF*
RENTABLE AREA: 195 SF*

* Square feet measurements subject to change upon site measure