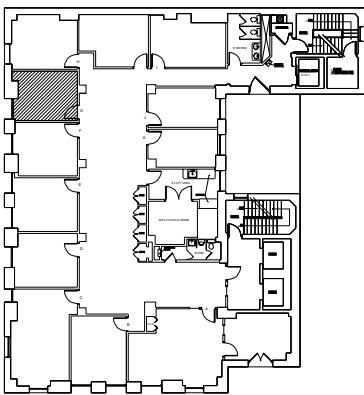


Comerica Suite #400G

SCALE: NONE



BUILDING KEY

SCALE: NO SCALE

Comerica Building

SUITE #400G

101 N. WASHINGTON AVENUE
LANSING, MI 48933

USEABLE AREA: 168 SF*

RENTABLE AREA: 207 SF*

* Square feet measurements subject to change upon site measure