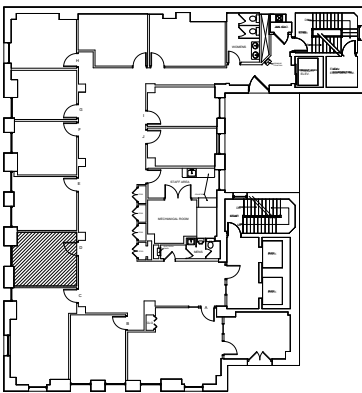


Comerica Suite #400D

SCALE: NONE



BUILDING KEY

SCALE: NO SCALE

Comerica Building

SUITE #400D

101 N. WASHINGTON AVENUE
LANSING, MI 48933

USEABLE AREA: 182 SF*

RENTABLE AREA: 211 SF*

* Square feet measurements subject to change upon site measure