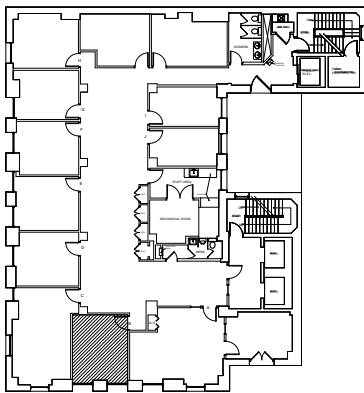


## Comerica Suite #400B

SCALE: NONE



### BUILDING KEY

SCALE: NO SCALE

Comerica Building

SUITE #400B

101 N. WASHINGTON AVENUE  
LANSING, MI 48933

USEABLE AREA: 201 SF\*

RENTABLE AREA: 233 SF\*

\* Square feet measurements subject to change upon site measure