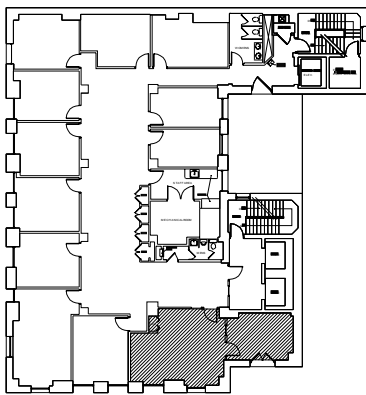


Comerica Suite #400A

SCALE: NONE



BUILDING KEY

SCALE: NO SCALE

Comerica Building

SUITE #400A

101 N. WASHINGTON AVENUE

LANSING, MI 48933

USEABLE AREA: 503 SF*

RENTABLE AREA: 618 SF*

* Square feet measurements subject to change upon site measure